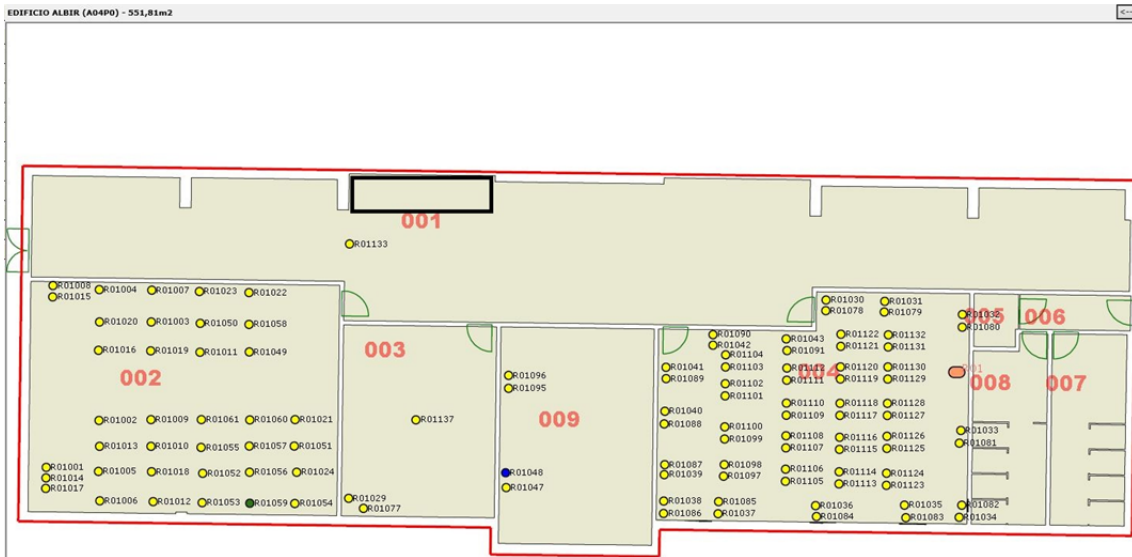


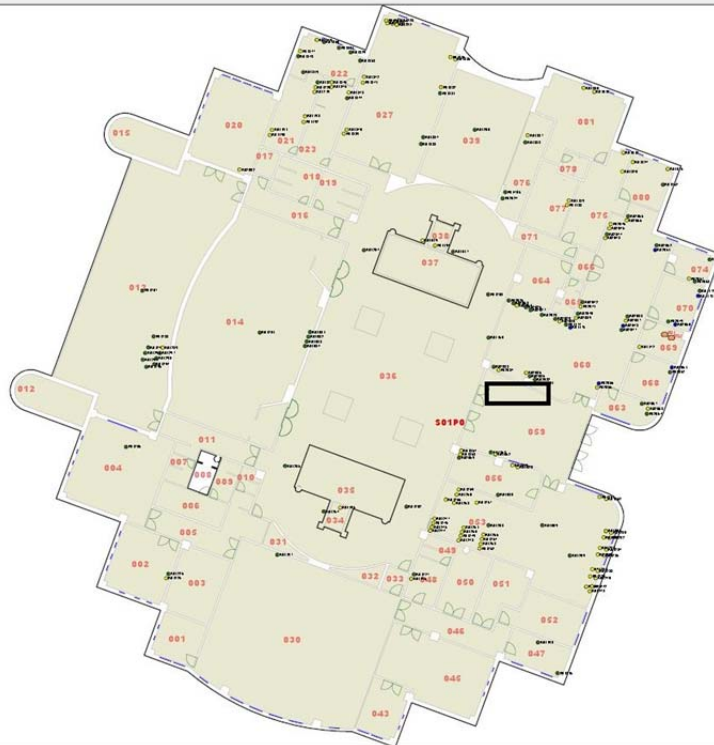
**LUGARES DE VOTACIÓN- VOTO PRESENCIAL. ELECCIONES RECTOR Y CLAUSTRO**

**Campus de Altea: Edificio Albir (A04P0)**

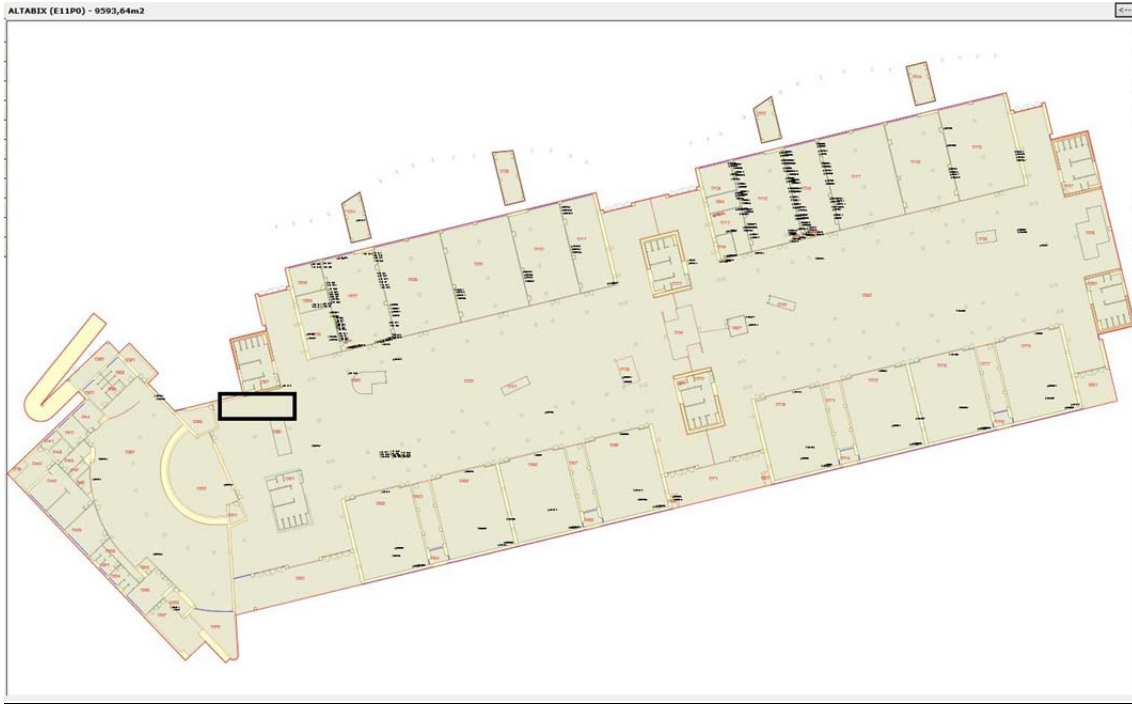


**Campus de San Juan: Edificio Francisco Javier Balmis (S01P0)**

FRANCISCO JAVIER BALMIS (S01P0) - 2670,45m<sup>2</sup>

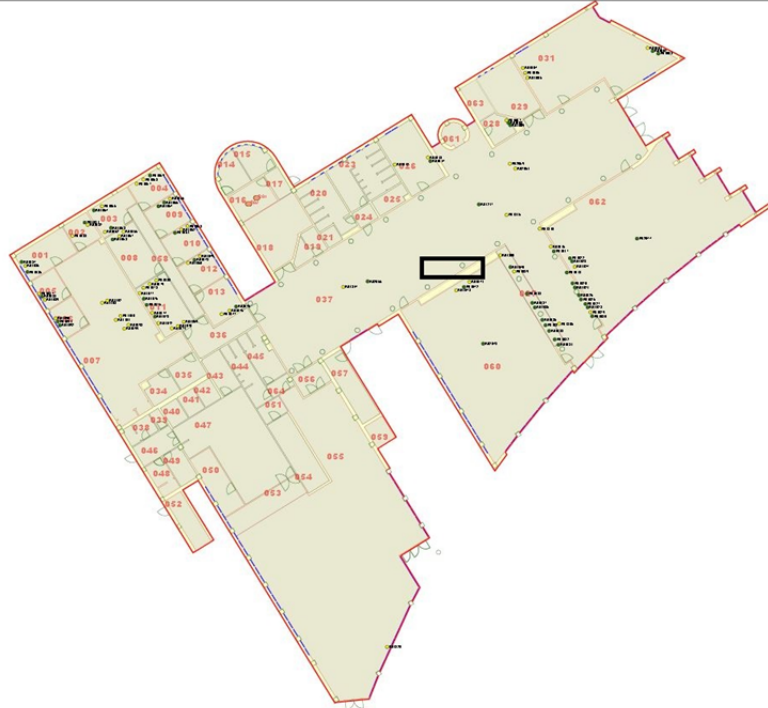


**Campus de Elche: Edificio Altabix (E11P0)**



**Campus de Orihuela-Desamparado. Edificio Tudemir (012P0)**

TUDEMIR (012P0) - 1912,21m<sup>2</sup>



**Campus Orihuela-Salesas: Edificio Casa del Paso (L01P0)**

